

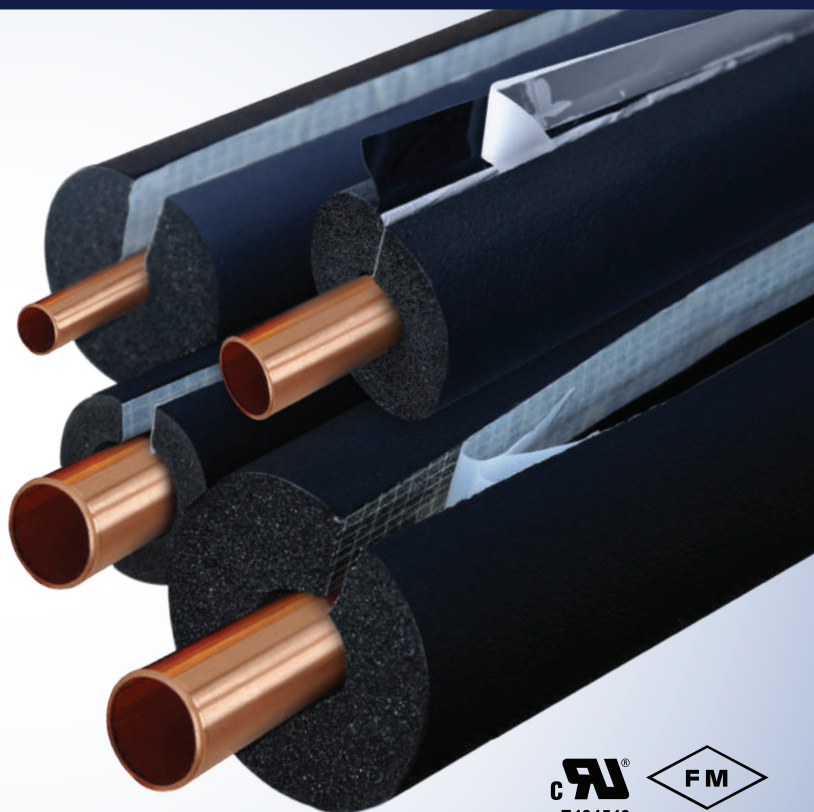
AEROFOAM[®]-NBR

LAP SEAL TUBES

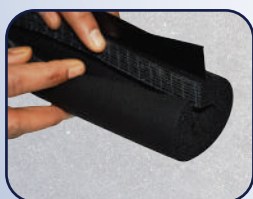


Aerofoam[®] NBR Lap Seal thermal insulation tubes are made of flexible closed cell elastomeric foam.

Installation is up to 50% faster compared to traditional insulation systems, especially designed to prevent condensation and energy losses.



Product does not include copper pipes.



Technical Data

Temperature Range	
Max. Line Temperature	180 °F
Min. Line Temperature	-40 °F
ASTM C534 Type 1	
<i>Aerofoam[®] Technical Support should be consulted for applications with temperatures below -40 °F.</i>	
Thermal Conductivity at 32 °F	0.22 (BTU-Inch)/(hr-ft ²)
Thermal Conductivity at 75 °F	0.23 (BTU-Inch)/(hr-ft ²)
Thermal Conductivity at 90 °F	0.25 (BTU-Inch)/(hr-ft ²)
ASTM C518	
Density (foam core only)	2.5 - 5.0 Lb/ft ³
Water Vapor Diffusion Resistance Factor μ BS EN 12086	$\mu > 17,000$
Water Vapor Permeance [perms] ASTM E96	0.005 perms-inch
Water Absorption [by volume] ASTM C209	0.06 %
Reaction to Fire	
ASTM E84	FSI <25 and SDI <50
FM 4924	Approved
UL 94	HF-1, V-0, 5VA

Resistance to Fungi ASTM G21	Passed
Resistance to Bacteria ISO 22196	Passed
Ozone Resistance ASTM D1149	Excellent
TVOC (Emission Rate - 24 hours) ASTM D5116	9.10 x 10 ⁻¹¹ oz/inch ² /h
Corrosion Risk DIN 1988	No corrosion risk for steel, stainless steel and copper pipe
Environmental Friendly	
Ozone Depletion Potential (ODP)	0
Global Warming Potential (GWP)	<5
CFC & HCFC, Dust, Fibres	Free

Storage: Can be stored for 12 months from manufacturing date in a dry, clean, dust free room at normal humidity and ambient temperature within 32 °F - 95 °F.







AEROFOAM® NBR LAP SEAL TUBES

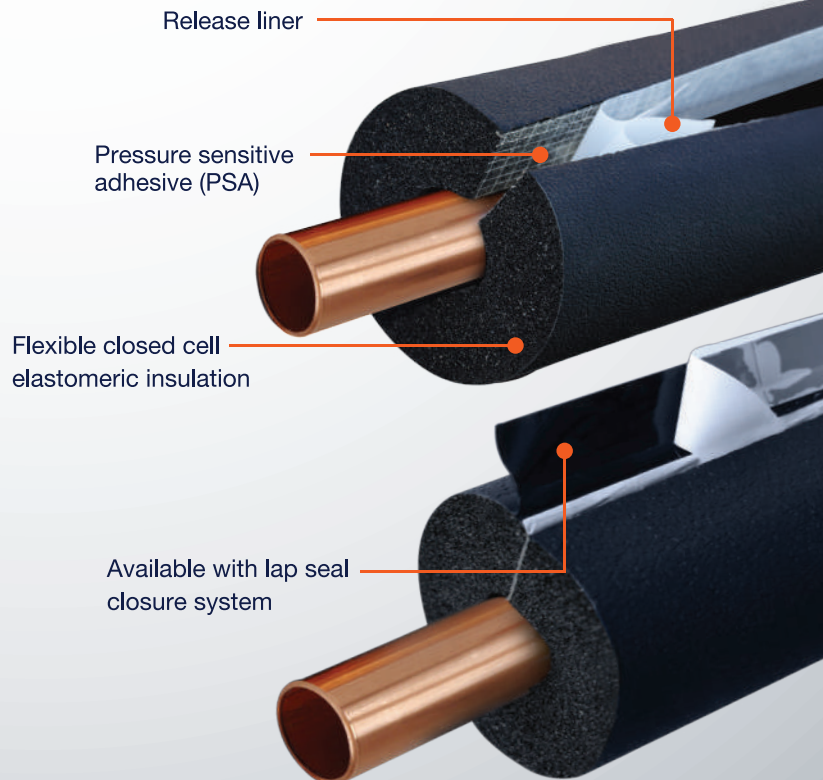
Insulation Tube Size	3/8"		1/2"		3/4"		1"		1-1/4"		
	Inch	Code	Pcs /Box	Code	Pcs /Box	Code	Pcs /Box	Code	Pcs /Box	Code	Pcs /Box
1/4"					NBRT34x14/LS	45	NBRT1x14/LS	30	NBRT114x14/LS	20	
3/8"	NBRT38x38/SS	120	NBRT12x38/LS	70	NBRT34x38/LS	40	NBRT1x38/LS	25	NBRT114x38/LS	20	
1/2"	NBRT38x12/SS	100	NBRT12x12/LS	60	NBRT34x12/LS	35	NBRT1x12/LS	20	NBRT114x12/LS	20	
5/8"	NBRT38x58/SS	80	NBRT12x58/LS	50	NBRT34x58/LS	30	NBRT1x58/LS	20	NBRT114x58/LS	15	
3/4"	NBRT38x34/SS	70	NBRT12x34/LS	45	NBRT34x34/LS	30	NBRT1x34/LS	20	NBRT114x34/LS	15	
7/8"	NBRT38x78/SS	60	NBRT12x78/LS	40	NBRT34x78/LS	30	NBRT1x78/LS	20	NBRT114x78/LS	12	
1"	NBRT38x1/SS	50	NBRT12x1/LS	40	NBRT34x1/LS	20	NBRT1x1/LS	15	NBRT114x1/LS	12	
1-1/8"	NBRT38x118/LS	50	NBRT12x118/LS	30	NBRT34x118/LS	20	NBRT1x118/LS	15	NBRT114x118/LS	12	
1-1/4"	NBRT38x114/LS	35	NBRT12x114/LS	30	NBRT34x114/LS	20	NBRT1x114/LS	15	NBRT114x114/LS	12	
1-3/8"	NBRT38x138/LS	30	NBRT12x138/LS	30	NBRT34x138/LS	20	NBRT1x138/LS	15	NBRT114x138/LS	12	
1-1/2"	NBRT38x112/LS	30	NBRT12x112/LS	25	NBRT34x112/LS	17	NBRT1x112/LS	12	NBRT114x112/LS	10	
1-5/8"	NBRT38x158/LS	30	NBRT12x158/LS	25	NBRT34x158/LS	15	NBRT1x158/LS	12	NBRT114x158/LS	10	
1-7/8"	NBRT38x178/LS	25	NBRT12x178/LS	20	NBRT34x178/LS	15	NBRT1x178/LS	10	NBRT114x178/LS	8	
2"	NBRT38x2/LS	25	NBRT12x2/LS	20	NBRT34x2/LS	12	NBRT1x2/LS	9	NBRT114x2/LS	8	
2-1/8"	NBRT38x218/LS	25	NBRT12x218/LS	20	NBRT34x218/LS	12	NBRT1x218/LS	9	NBRT114x218/LS	8	
2-3/8"	NBRT38x238/LS	20	NBRT12x238/LS	18	NBRT34x238/LS	12	NBRT1x238/LS	9	NBRT114x238/LS	6	
2-1/2"	NBRT38x212/LS	20	NBRT12x212/LS	18	NBRT34x212/LS	12	NBRT1x212/LS	9	NBRT114x212/LS	6	
2-5/8"	NBRT38x258/LS	20	NBRT12x258/LS	15	NBRT34x258/LS	10	NBRT1x258/LS	8	NBRT114x258/LS	5	
2-7/8"			NBRT12x278/LS	15	NBRT34x278/LS	10	NBRT1x278/LS	6	NBRT114x278/LS	4	
3"			NBRT12x3/LS	12	NBRT34x3/LS	10	NBRT1x3/LS	6	NBRT114x3/LS	4	
3-1/8"			NBRT12x318/LS	12	NBRT34x318/LS	10	NBRT1x318/LS	6	NBRT114x318/LS	4	
3-1/2"			NBRT12x312/LS	10	NBRT34x312/LS	8	NBRT1x312/LS	6	NBRT114x312/LS	4	
3-5/8"			NBRT12x358/LS	10	NBRT34x358/LS	7	NBRT1x358/LS	6	NBRT114x358/LS	4	
4"			NBRT12x4/LS	8	NBRT34x4/LS	6	NBRT1x4/LS	4	NBRT114x4/LS	3	
4-1/8"			NBRT12x418/LS	8	NBRT34x418/LS	6	NBRT1x418/LS	4	NBRT114x418/LS	3	
4-1/4"			NBRT12x414/LS	8	NBRT34x414/LS	6	NBRT1x414/LS	3	NBRT114x414/LS	3	
4-1/2"			NBRT12x412/LS	8	NBRT34x412/LS	6	NBRT1x412/LS	3	NBRT114x412/LS	3	

Note: Available length of tubes 6 ft ±1.5%

SS - Self Seal
LS - Lap Seal

Features

-  Closed cell structure
-  Mold and mildew resistant
-  Temperature range: -40 °F to 180 °F
-  Condensation control and energy saving
-  Suitable for cooling and heating systems
-  Fast and easy installation compared to traditional solutions



Product does not include copper pipes.

Disclaimer: This information on Hira Industries products is presented to the best of our knowledge. All product data is based on average values and is for guidance only. As these products are subject to constant research and development, we reserve the right to update the contents without notice.